

Eigendom der N.V. Philips' Gloeilampenfabrieken, Eindhoven. Vervielfältigung oder Bekanntgabe an Dritte, in welcher Form auch, ohne schriftliche Genehmigung der Eigentümerin nicht gestattet.

Propriété de la N.V. Philips' Gl. lampenfabrieken, Eindhoven. La reproduction ou la communication à des tiers, sous quelque forme que ce soit, n'est permise qu'avec l'autorisation écrite de la propriétaire.

Property of the N.V. Philips' Gloeilampenfabrieken, Eindhoven. Reproduction or disclosure to third parties, in any form whatsoever, not allowed without written consent of the proprietors.

Eigendom van de N.V. Philips' Gloeilampenfabrieken, Eindhoven. Vervielföldigung of mededeling aan derden in welke vorm ook, is zonder schriftelijke toestemming van eigenares niet geoorloofd.

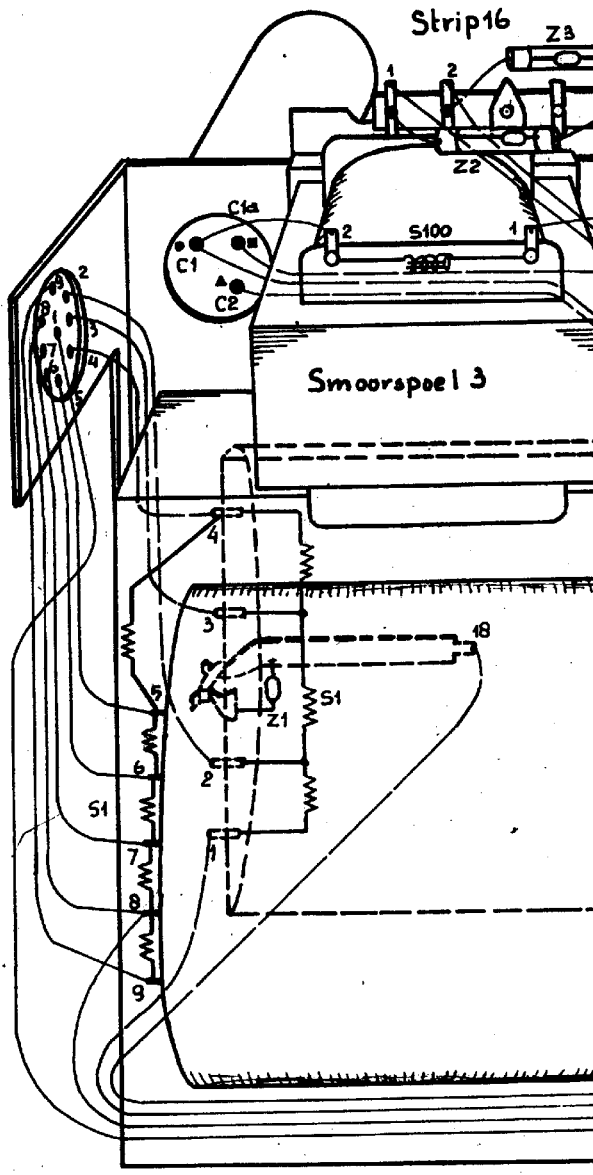
ALG. GEG. GENERAL DATA		Circuit type		AFGELEIDE APPARATEN - DERIVED TYPES	
Schematype	Circuit type	F8X72A = F8X70A, achter met ingebouwde stereo-magnetaansluiting afgeleid van EL3516			
Spanning en voeding	Voltage and supply				
Golfgelieden: st. 1	Wave ranges: pos. 1				
" 2	" 2				
" 3	" 3				
" 4	" 4				
" 5	" 5				
" 6	" 6				
" 7	" 7				
" 8	" 8				
Bandspreiding	Bandspraad				
FEATURES					
Merkt	Brand				
Luidspr. type	Speaker type				
Extra luidspr. aansl.	Ext. speaker connect.				
Luidspr. uitsch. baar	Speaker switch				
Pick-up aansl.	Pick-up socket				
Pick-up schak.	Pick-up switch				
Platen-speler wiss.	Record-player changer				
Pick-up koppen	Pick-up heads				
Magnetaansl.	Tape Recorder conn.				
Kwaliteitschakelaar	Performance sw.				
Tegenkoppeling	Inverse feedback				
Klankregeling hoog	Tone control high				
" laag	" low				
Var. bandbreedte	Var. bandwidth				
Afstemindicatie	Tuning indicator				
Ingeb. antenne	Built in aerial				
Ingeb. ant. uitsch. baar	Sw. for built in aerial				
Netreel	Mains filter				
Zuig sperkring vast	Wave trap, fixed				
" facult.	" optional				
Fijregeling	Vernier drive				
Temp. veiligheid	Temp. fuse				
Veiligheidscontact	Safety contact				
Spanningsaflazing	Voltage indication				
Uitvoering	Execution				
Mesieroveren	Extra accessories				
ELECTR. GEGEVENS ELECTRICAL DATA		AM		FM	
Aantal H.F. kringen	Number of H.F. circ.	OPMERKINGEN - REMARKS			
M.F. "	" I.F. "				
M.F. in kHz.	I.F. in Kc.'s				
Selectiviteit (S9) M.G.	Selectivity (S9) M.W.	small:	broad		
" L.G.	" L.W.				
Gevoeligheid in μ V st. 1	Sensitivity in μ V pos. 1				
" 2	" 2				
" 3	" 3				
" 4	" 4				
" 5	" 5				
" 6	" 6				
" 7	" 7				
" 8	" 8				
B 1.6 in kHz. M.G.	B 1.6 in Kc.'s M.W.	small:	broad:		
" L.G.	" L.W.				
Spiegelverhouding M.G.	Image ratio M.W.				
" L.G.	" L.W.				
Verbruik in W. 110 V	Power cons. in W 110 V				
125 V	125 V				
220 V	220 V				
El. uitg. verm. in W. 110 V	Output in W 110 V				
(D = 10%) 125 V	(D = 10%) 125 V				
220 V	220 V				
Ac. uitg. verm. in mW 110 V	Acoust. output in mW 110 V				
(D = 10%) 125 V	(D = 10%) 125 V				
220 V	220 V				
BUIZEN VALVES		AM		FM	
SCHAAL SCALE					
Soort schaal	Kind of scale				
Schaalachtergrond	Scale background				
Afmetingen in mm.	Dimensions in mm.				
Materiaal	Material				
Verlichting	Lighting				
Schaalbedrukking	Scale markings				
Steg v.d. wijzer	Stroke of pointer				
Wijzer	Pointer				
IND.					
Golfgelieden	Wave ranges				
UITERLIJK EXTERIOR					
Kast	Cabinet				
Doek	Cloth				
Knoppen	Knobs				
Plaats v.h. embleem	Place of emblem				
Afmetingen in mm.	Dimensions in mm.				
C.V.: 16265	S.V.:	ONTVANGER RECEIVER 57/58		TYPE	
OPMERKING BEH-REM		SPECIFICATIE SPECIFICATION		GRONDTYPE F8X72A	
GEY-DESS GEZ-DRAWN				BL. P.-SH. 41 VERV.-REMP ERS.-SUPERS.	
				DAT. 25-10 DAT.	
N.V. PHILIPS' GLOEILAMPENFABRIEKEN, EINDHOVEN, HOLLAND - HOOFDINDUSTRIEGROEP APPARATEN					

S
C
R

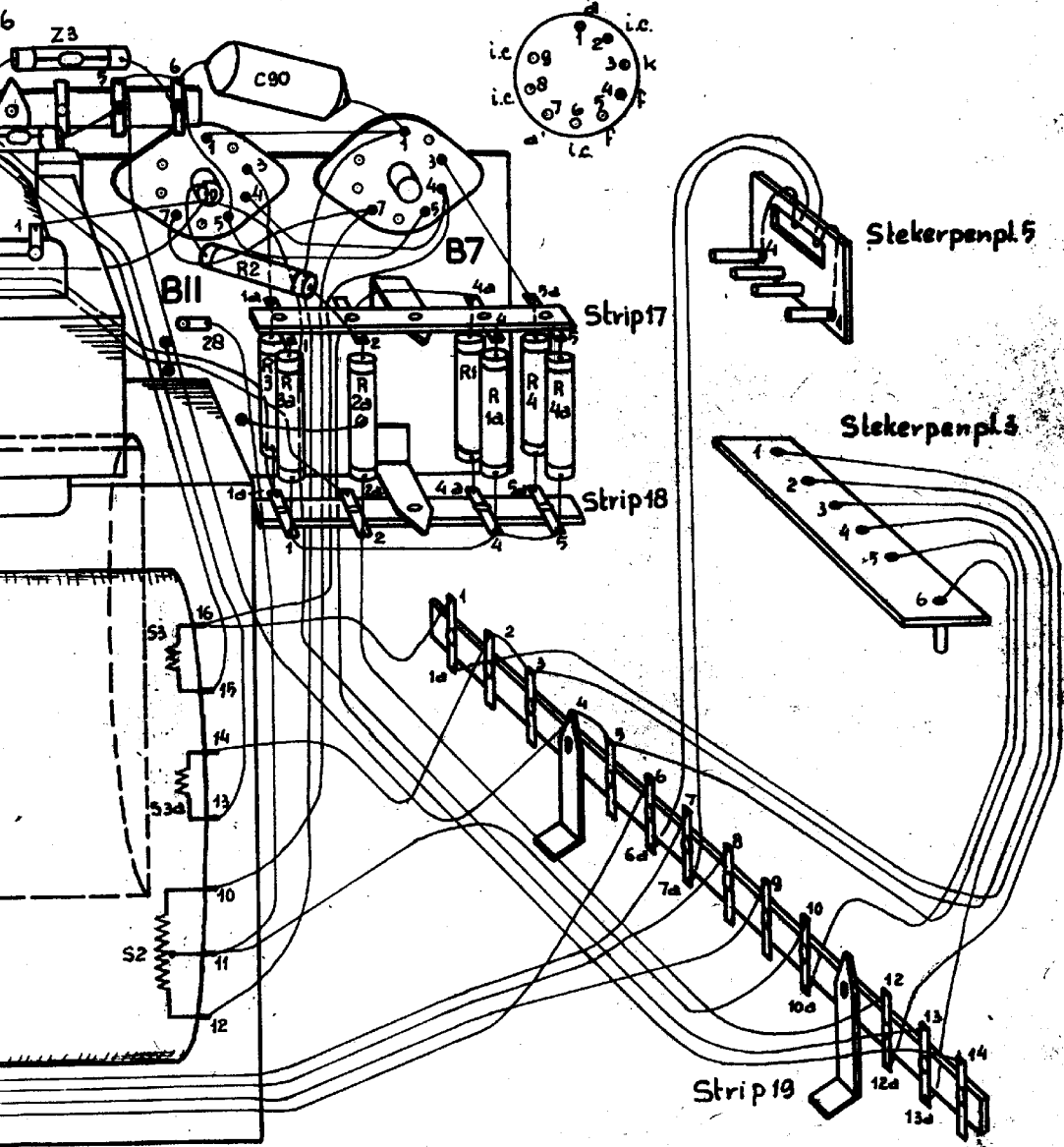
1. 1a. 2. 100.

1
2
3
4
5
6

102
106
210
292
540
278
4



B11.7.

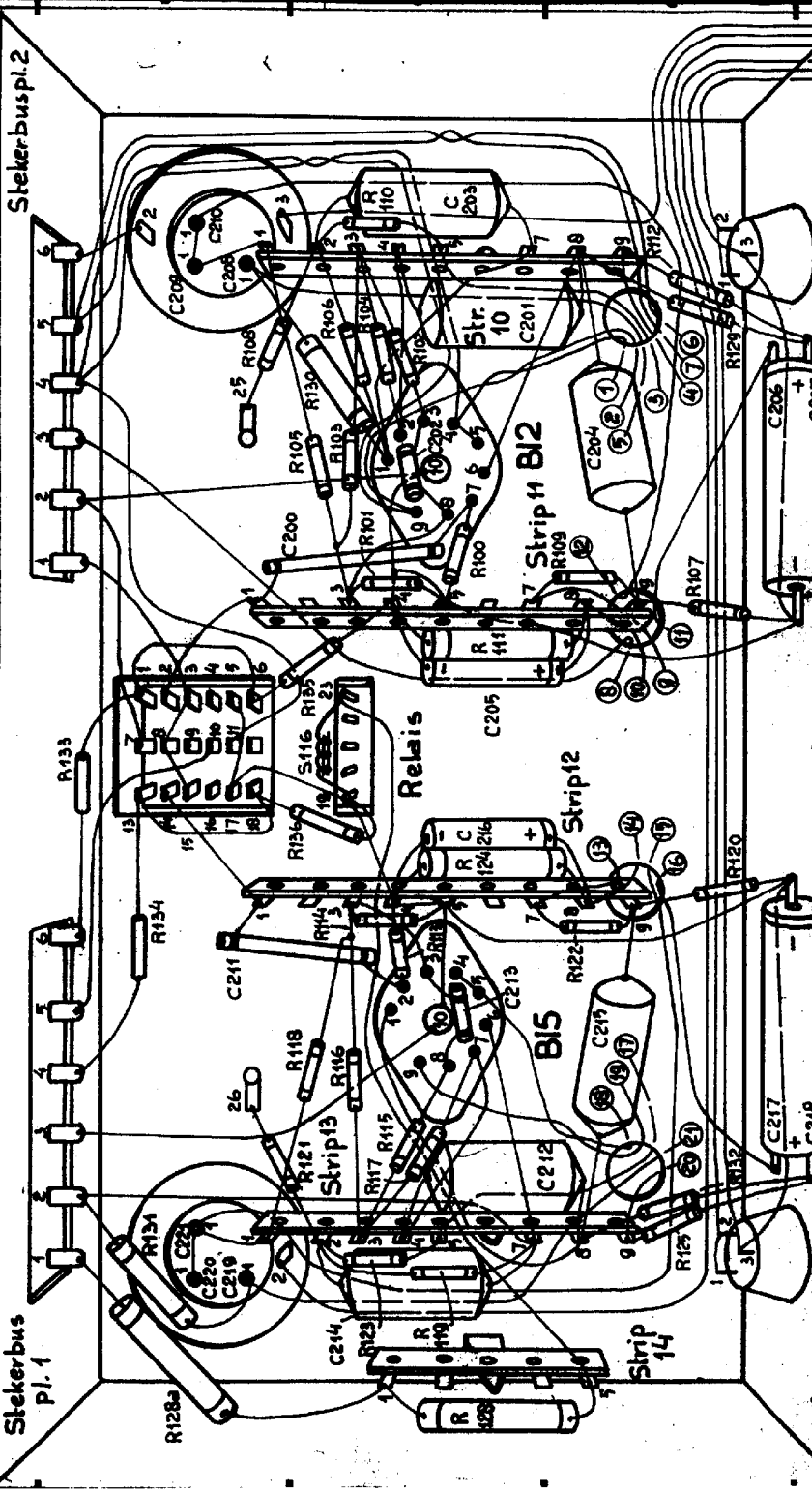


dd. Prinsjeschema:

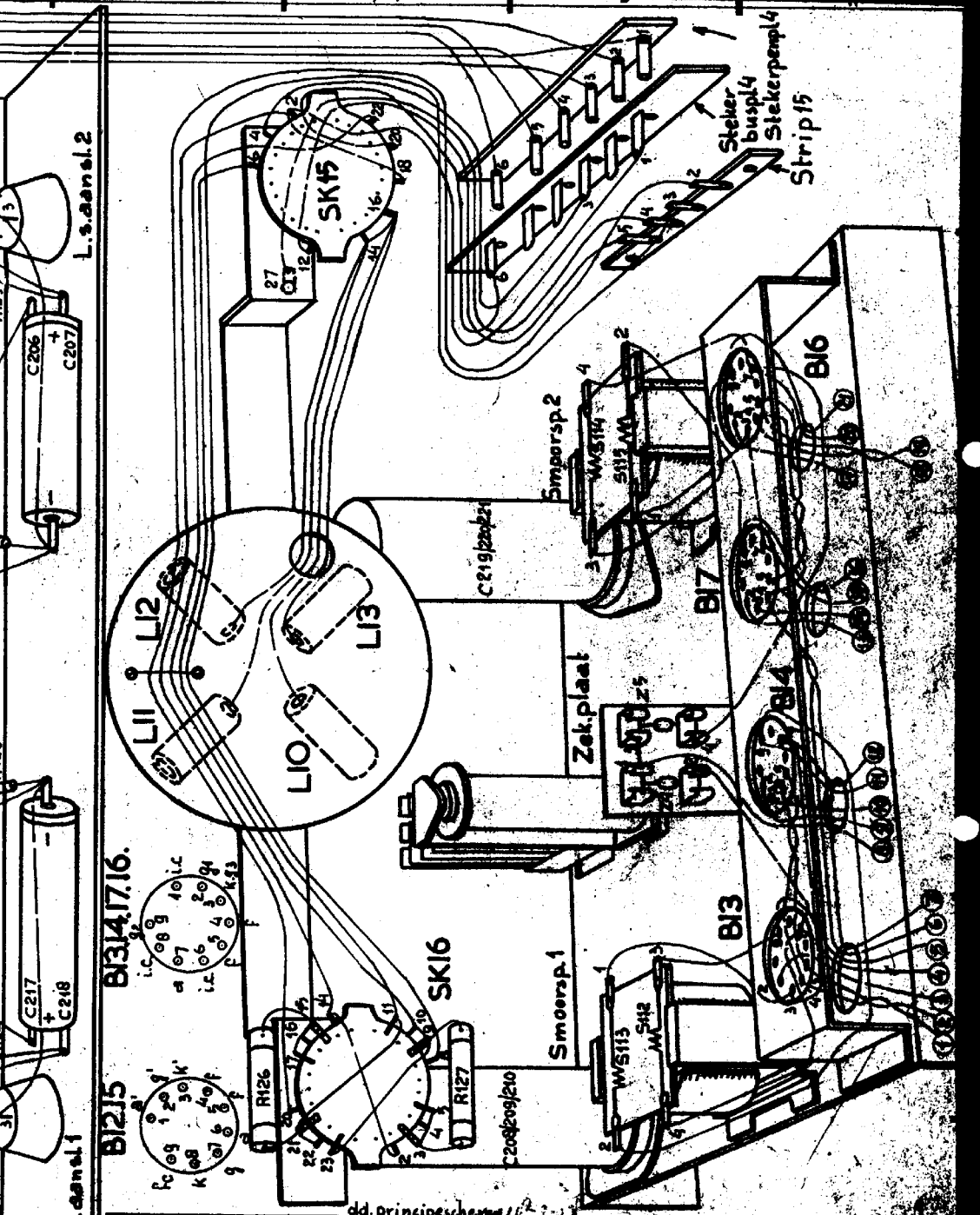
Radiogram. 57158		58	F8X72A
Bedradingsschema		P.S.A.	
RAY-DIAGN. 0880-082	Fellen	DAT. 24-V-57	VERV.-SOORT 25
A	N.V. PHILIPS' GLOEILAMPENFABRIEKEN. EINDHOVEN — NEDERLAND		FORM. B

107 106 105 104 103 102 101 100 99 98 97 96 95 94 93 92 91 90 89 88 87 86 85 84 83 82 81 80 79 78 77 76 75 74 73 72 71 70 69 68 67 66 65 64 63 62 61 60 59 58 57 56 55 54 53 52 51 50 49 48 47 46 45 44 43 42 41 40 39 38 37 36 35 34 33 32 31 30 29 28 27 26 25 24 23 22 21 20 19 18 17 16 15 14 13 12 11 10 9 8 7 6 5 4 3 2 1

S	113, 112	214, 220, 219, 221, 212	217, 218, 215, 213, 211	205	200	202, 204, 206, 207, 201, 203, 208, 210, 203
C		119, 121, 123, 126, 127, 125, 132, 124, 117, 115, 118, 116	124, 113, 114, 122, 120, 128, 136, 133	135, 111, 107, 101, 103, 100	105, 103, 130, 100, 104, 102, 123, 142, 110	
R						



Sluitingsaansluiting
 Dwingende positieve tegenside met N (volspanning)
 Ondersid. met help lengte of plaats (geen)
 Kwantiteitsaansluiting



L.s. panel 2

B1314, B1716

B1215

L.s. panel 1

dd. princieschema 1/2-3

Radiogram. 57/58

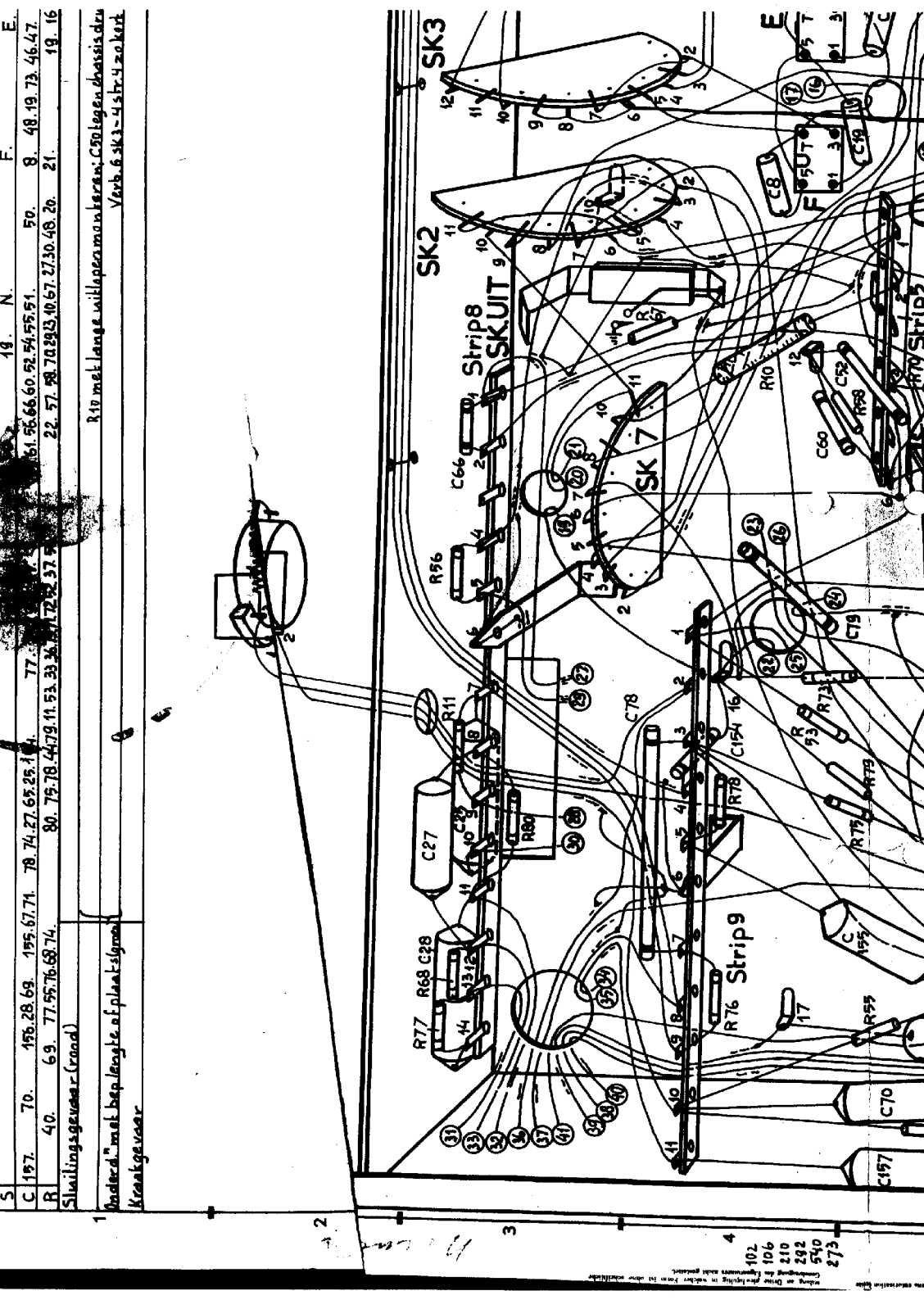
58

Bedradingsschema Versteker

F8X72A

DAT 24-V-57

10/10-54



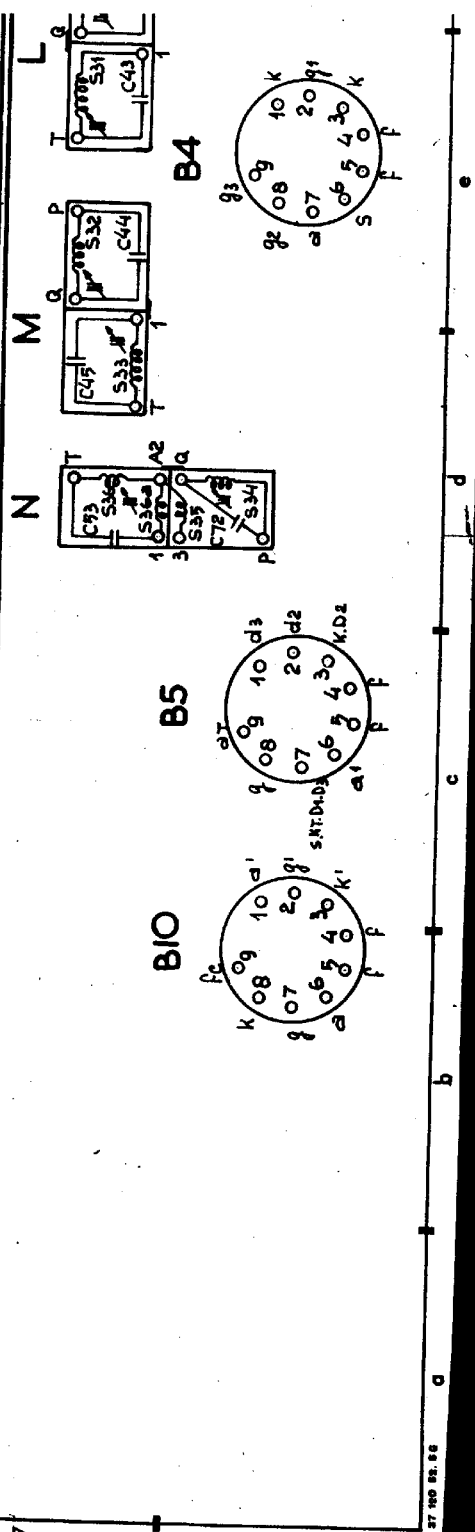
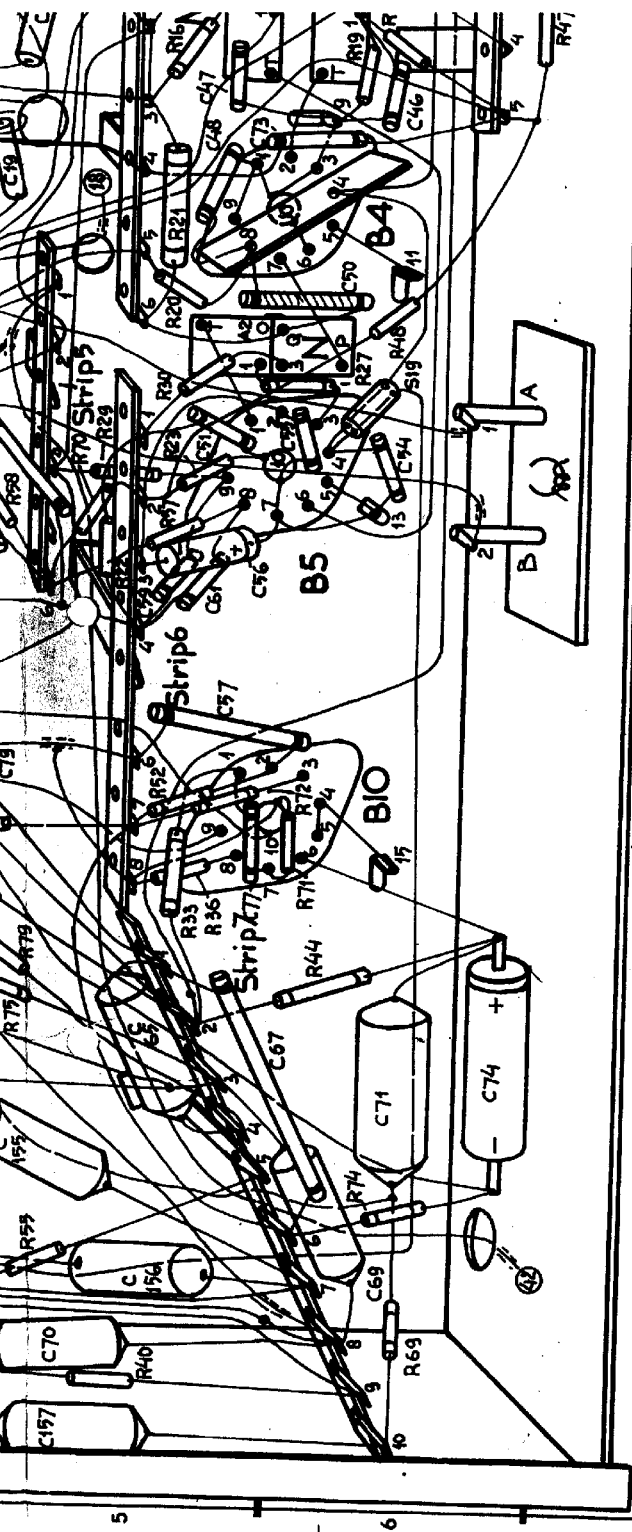
S	N	F	E
C 197	70	195.28.69	195.67.71
R	40	69	77.55.76.68.74
		80	75.78.44.79.11.53.33.34.12.22.37.5
		22	57.58.70.29.10.67.27.30.48.20
		50	8.48.19.73.46.47
		21	19.16

3-10 met lange willekeurige maat: C50 tegen chassis dra
 Verb. 6. SK3-4.5 tr. 4 zo kort

1
 2
 3
 4

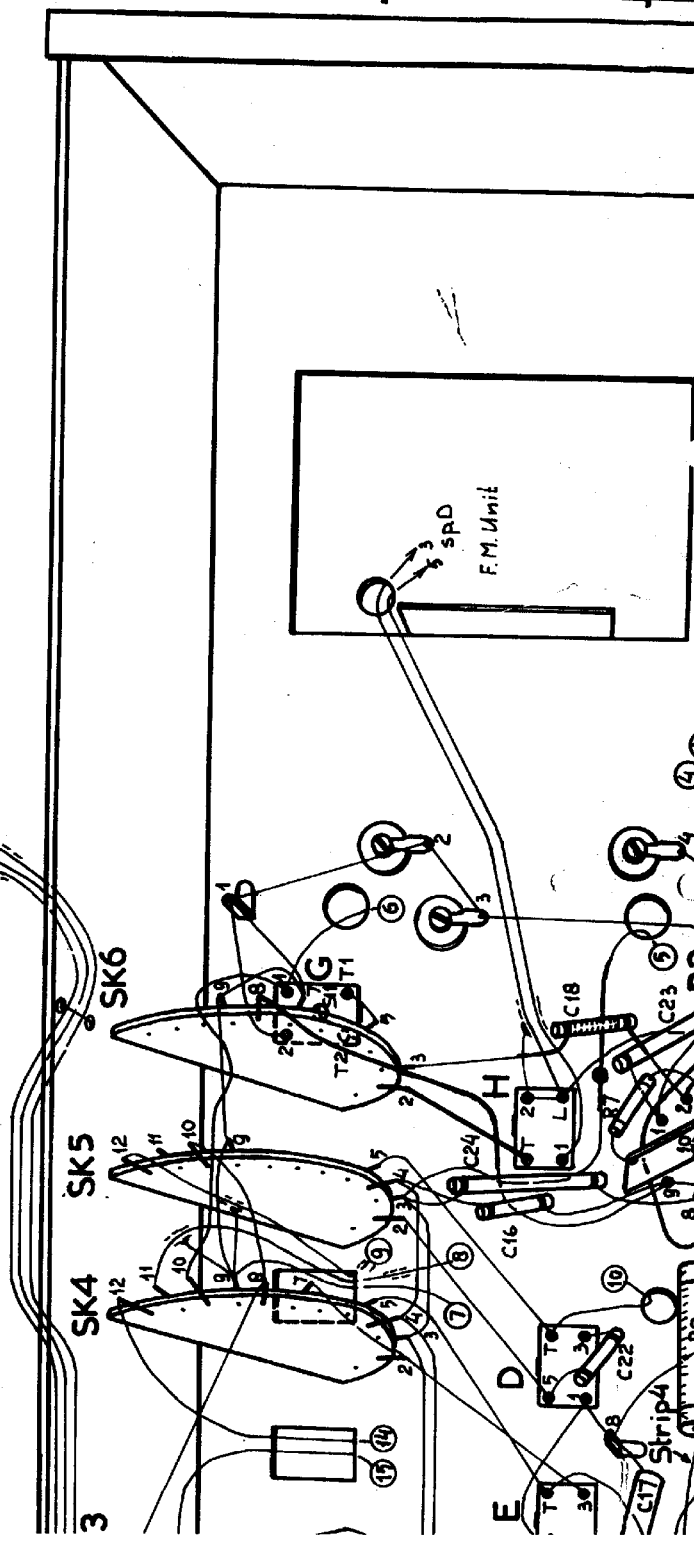
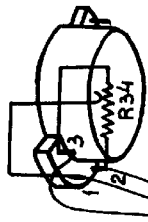
102
 106
 210
 292
 540
 273

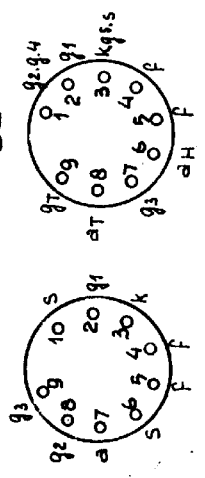
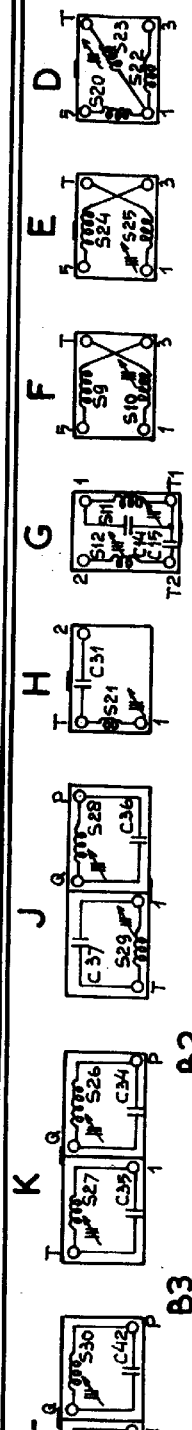
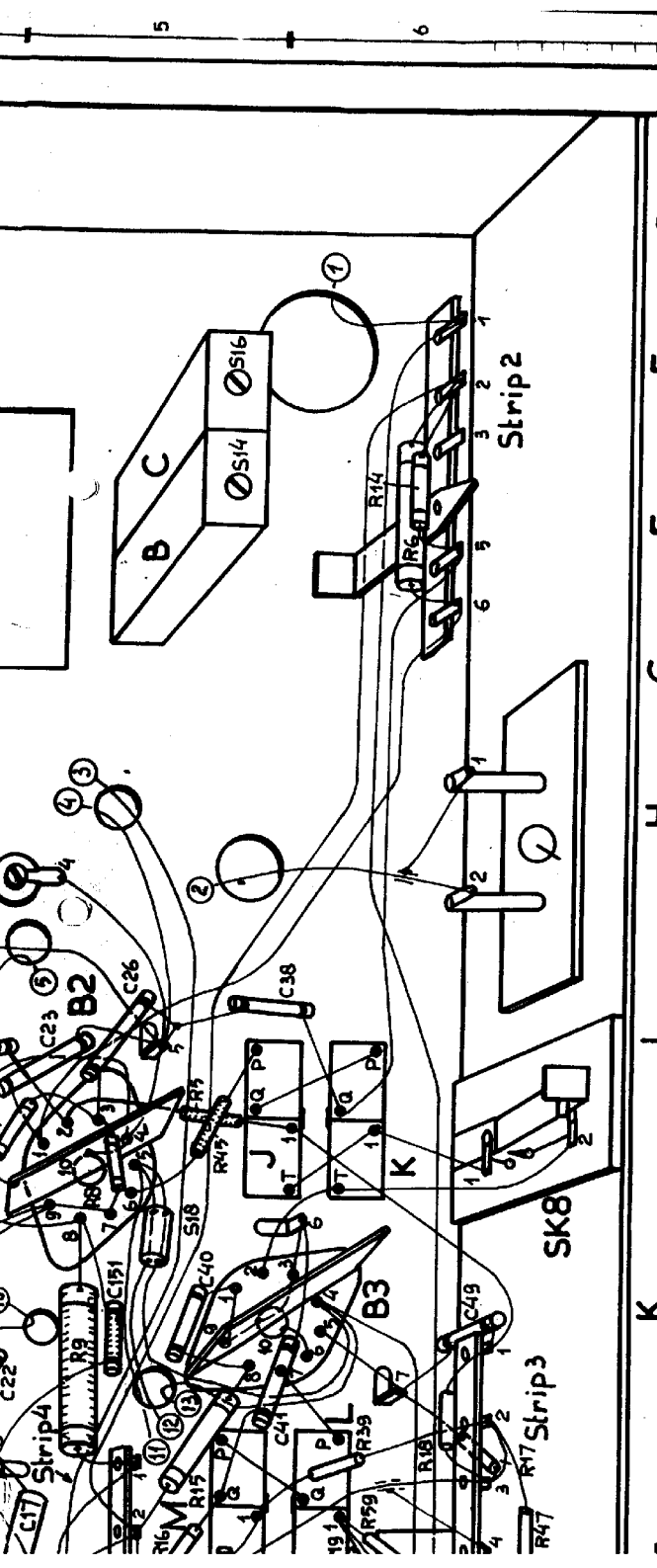
Using an 8 1/2" press in ink on other materials
 depending on requirements make contact



E. M. L. D. 48. H. J. K.
 7. 17. 41. 22. 151. 49. 40. 46. 24. 23. 18. 26. 38.
 16. 59. 47. 45. 39. 17. 18. 9. 8. 7. 45. 5. 34.

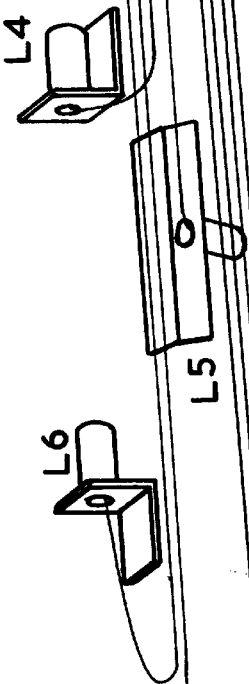
drukken: R0 tegen C451 doorkken. Mit 1.508 kort beweder. Mit 0.5 van B2 zo kort mogelijk houden.
 ert mogelijk. Verb. 0.5 k6 vrij van sk6 en onder verb. 2.5 k6 - Tap. 11. leggen; 0.5 afkruigen van B2. Verb. 3.5 k5 - f04 ventkitten op abssis





ddd-principle schema

Radio-gramm. 57158		FORM A2	
Bedrijvingschema		Bl. 22	
F2164		REK.-BUREAU	
A		N.V. PHILIPS' GLOELAMPENFABRIEKEN EINDHOVEN - NEDERLAND	



Deze verb. met kleefband bandelen.

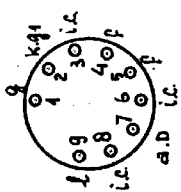


Deze verb. vrijhouden van Sk. ANT2.

Staaftant. L.G.



B8



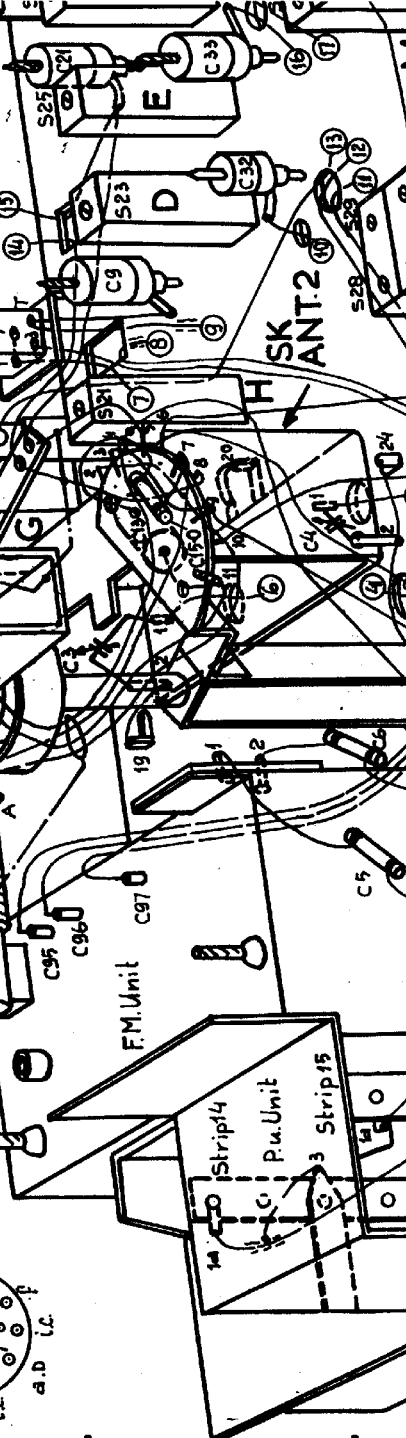
102
196
210
232
540
273

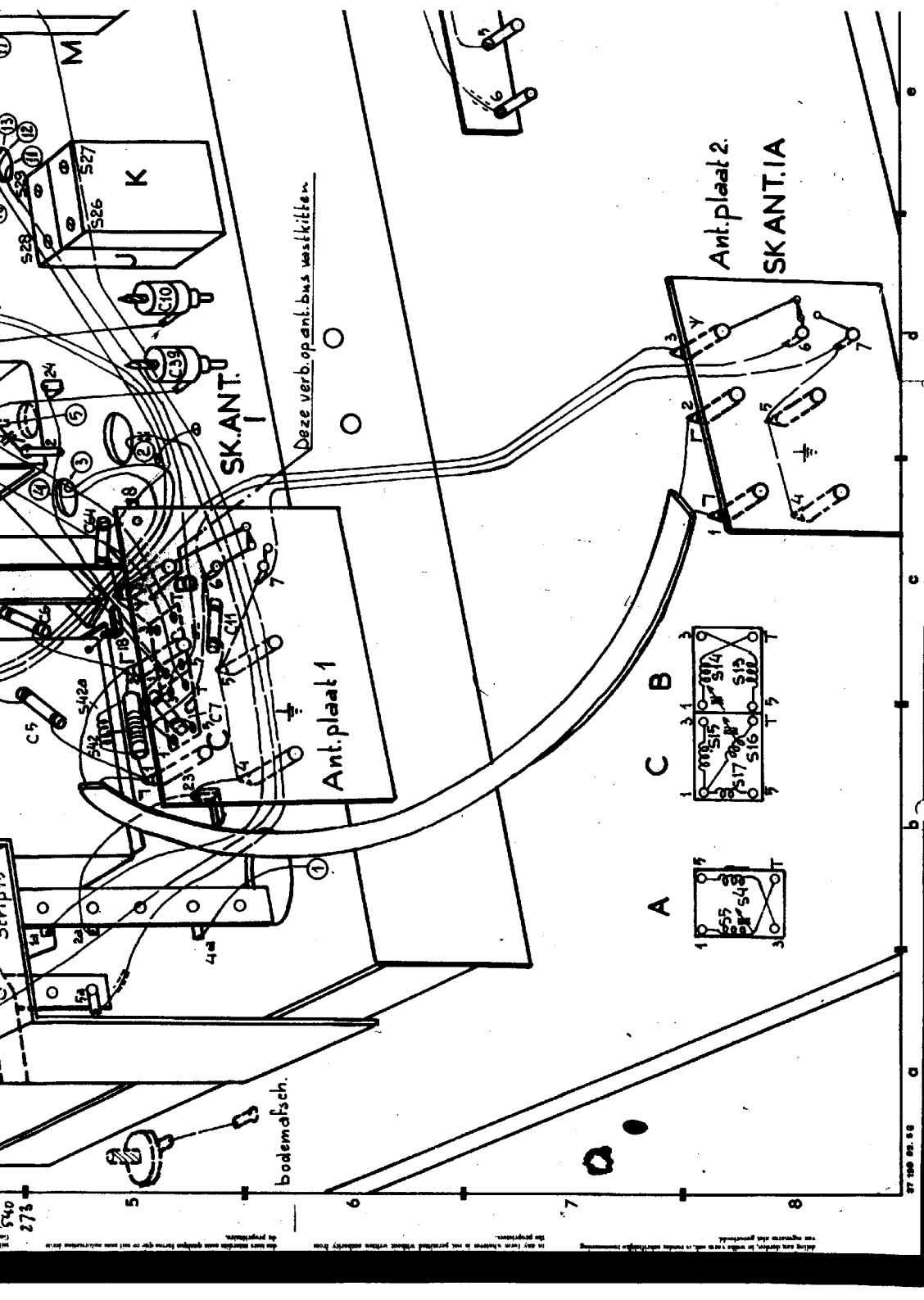
A 2

3

4

Using an 8mm punch-die in rubber film to make the holes.



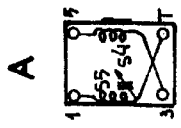
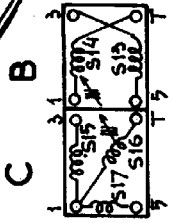


Ant.plaat 2.
SK ANT. 1A

Deze verb. op ant. bus vastkittem

SK ANT. 1

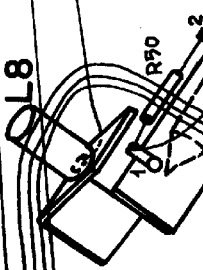
Ant.plaat 1



bodemd.fsch.

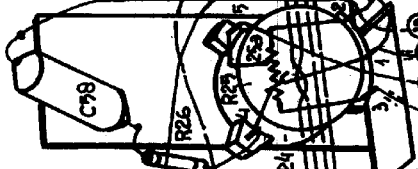


L8



B20

NET
SCH.



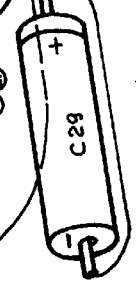
C98

R26

R24



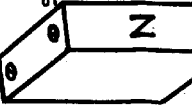
bodema
fisch.



C29

S 36/36A

S 34/35



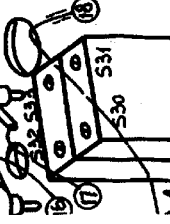
N

L2

S10

F

C20



S31

S30

SK13

SK10

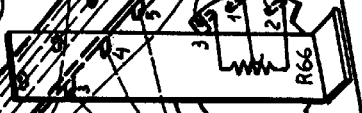
SK11

SK12

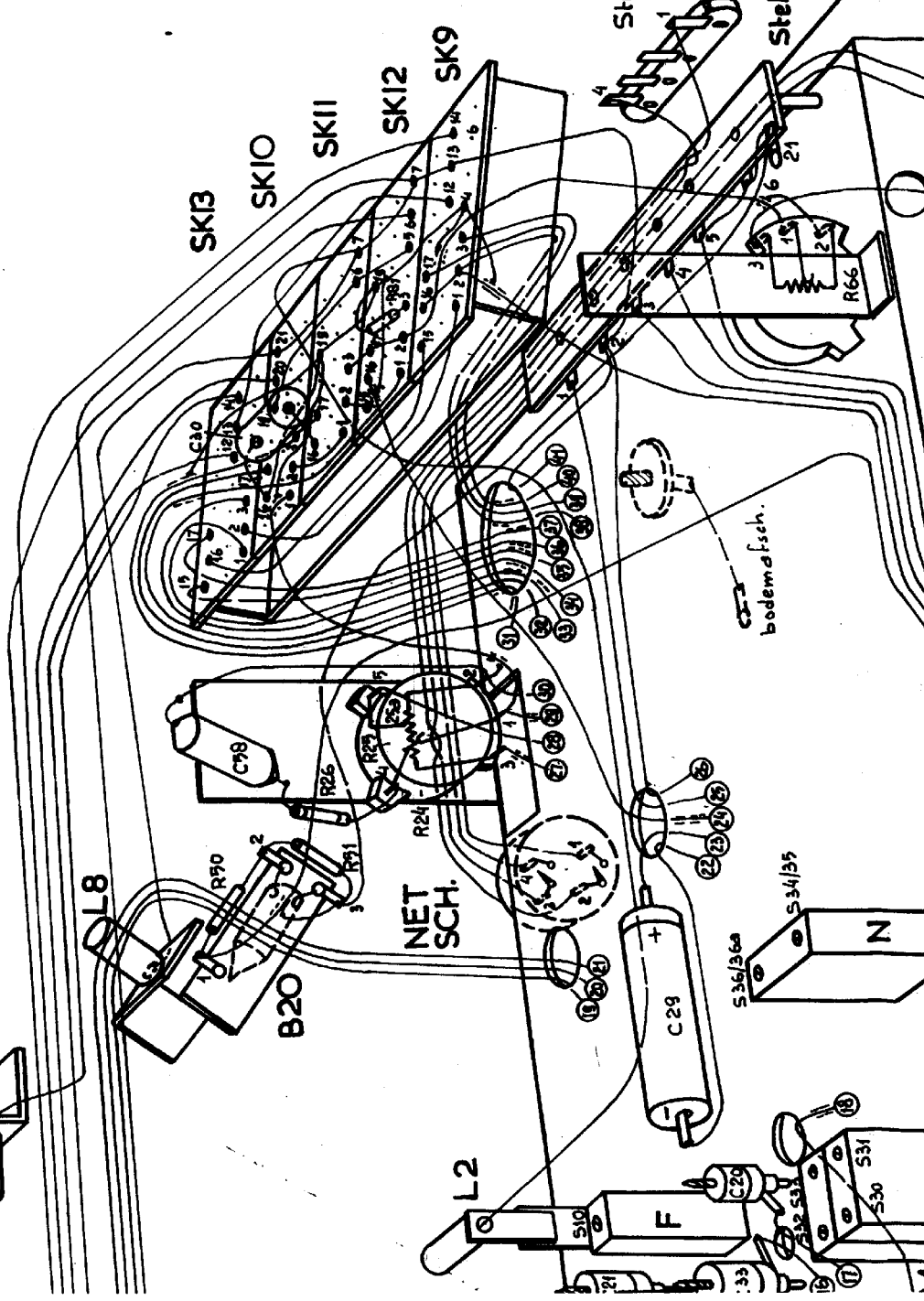
SK9

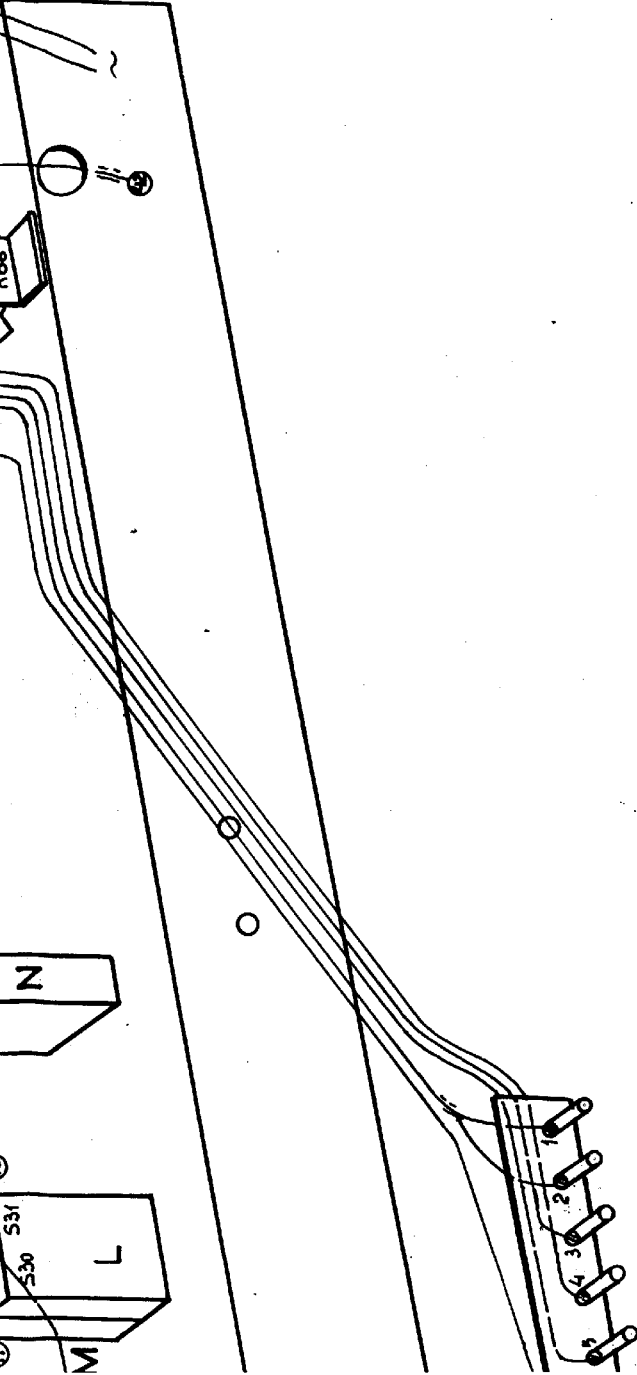
Stekerbuspl.5

Stekerbuspl.3



R66





Stekkerpenpl.2

dd. princieschema:

NORM D 28 NORME	NORM D 28 NORME	PROJ. EUROP 	SIGNAL SCALE PASSE PART	mm	SAM. Nr. ASSEM. N° N° D'ENSEM-BLUSAM. N°	A.ANT. QUANT. STUCCZ.	MOD. N° PATTERN N° Nr. du MOD.	COMM. N°	QUANT.
					23 = 1.2 25.0 24 = 0.2 25.0 25 = 1.0 25.0 26 = 0.05 25.0	1.002 NORM 1.001 STAMP. D'P 0.005 NORME	14, 16, 17, 19, 21, 1 14, 16, 17, 19, 21, 1	NORM STAND N°	14, 16, 17, 19, 21, 1 14, 16, 17, 19, 21, 1
Radio gram m. 57/58					F8X72A				
Bedradingsschema's Onb. ged.					VERB. SUPERS.				
DAT. 24-4-58					SHIP 23				
A					N.V. PHILIPS' GLOEILAMPENFABRIEKEN EINDHOVEN — NEDERLAND				

FORM. A2